

Metallized Polypropylene RC Snubber Network  
金屬化聚丙烯膜RC組件吸收網絡

0: Product Code System 3 產品代碼系統 3

For example: The part number, comprising 18 digits, is formed as follows.

舉例: 產品料號由 18 位數位組成, 如下:

R	C	5	0	4	K	2	L	E	4	1	0	2	2	A	3	0	0
1	2	3	4	5	6	7	8	9	10	11	12	13	14	15	16	17	18

Digit 1~2:	Type Code	Digit 11:	Circuit and Phase type
數位 1~2:	型號代碼	數位 11:	電路和相類別
Digit 3~5:	Capacitance Value Code	Digit 12~15:	Resistor and Wattage Code
數位 3~5:	容值代碼	數位 12~15:	電阻代碼
Digit 6:	Capacitance Tolerance Code	Digit 16:	Lead Code
數位 6:	偏差代碼	數位 16:	引綫代碼
Digit 7~8:	Rated Voltage Code	Digit 17:	Connected Terminal Code
數位 7~8:	額定電壓代碼	數位 17:	連接端子代碼
Digit 9~10:	Case or Pitch Code	Digit 18:	Type Series Code
數位 9~10:	殼體 或 腳距代碼	數位 18:	型號序列碼

0.1 Digit 1 to 2 數位1~2: Type Code:型號代碼

TYPE 型號	MPX	MPA	MPT	MPK	MPR	MS3	RS3	MKP	MKR	SCD	SCR	SCH	RCS
CODE 代碼	PX	PA	PT	PK	PR	S3	RS	KP	KR	CD	CR	CH	RC

0.2 Digit 3 to 5 數位3~5: Capacitance Expressed in 3-digit Code 3位數位代碼表示容值

The first 2 digits indicate significant figures, and the third digit specifies the number of zero to follow.

前兩位表示基數, 第三個數位表示其後零的個數

This gives the capacitance in picofarads. 容量值單位為皮法

For examples 舉例: 504 = 50\*10<sup>4</sup> pF = 50,0000pF = 50.0nF = 0.5uF

0.3 Digit 6-數位6 Capacitance tolerance 容量偏差

TOLERANCE	± 1%	± 2%	± 3%	± 5%	± 10%	± 20%
CODE 代碼	F	G	H	J	K	M

0.4 Digit 7 to 8 數位7~8: Rated Voltage 額定電壓: (Note: VAC can be expressed in first two digits, such as, 480Vac code "48")

VR(AC)	24	125	250	275	400	440	450	480	500	600	660	700
CODE	1B	2L	21	31	2R	4A	2T	48	2M	2Z	66	70

0.5 Digit 9 to 10 數位9~10: Case Code by two digits 表示殼體或兩個數位的腳距代碼

殼體寬度W	26	32~39	40~49	50~59	60~	圓柱型
Case NO殼體代碼	E*	F* or 3*	4*	5*	6*	R*

0.6 Digit 11 數位11 circuit and phase code 系列代碼:

"1" circuit 1 and single-phase "V" circuit 2(RC+VDR) and single-phase

"3" circuit 1 delta connection and 3-phase "4" circuit 1,3-phase Y connection

0.7 Digit 12~15 數位 12~15: 12~14 expressed resistor value, 15 is the wattage code as follow

WATTAGE	1/2	1	2	5	7	9	10	15	20
CODE 代碼	W	1	2	5	7	9	A	B	C

0.8 Digit 16 數位16: Lead code: Expressed in 1-letter code 引綫以1個數位代碼表示, example 舉例:

UL 1015	16AWG	18AWG	20AWG	MTW	0.8Φ	1.0Φ	1.2Φ
CODE	1	2	3	CODE	6	7	8

0.9 Digit 17-數位17, connected terminal code 連接端子代碼

端子	無端子	250母端	圓孔片式	針刺端子	U型片式
Code	0	5	6	7	8

0.9 Digit 18-數位18: Type Series Code 型號序列碼

## Metallized Polypropylene RC Snubber Network

RoHs compliant

### 金屬化聚丙烯膜RC組件吸收網絡

Type RCS

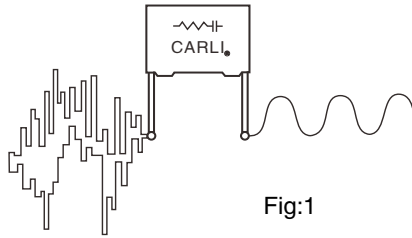


Fig:1

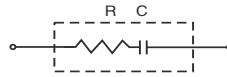


Fig:2-1

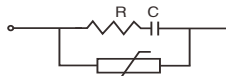


Fig:2-2

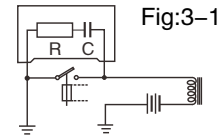


Fig:3-1

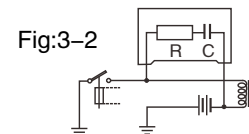


Fig:3-2

### Construction:

- ◆ Metallized Polypropylene film capacitor in series with a resistor (Fig 2-1,2-2)  
構造： 金屬化聚丙烯膜電容器與電阻串聯而成
- ◆ Encapsulated in plastic box or wrapped tape with retardant Epoxy Resin sealed of UL 94V0  
塑膠殼體或膠帶封裝，UL 940級阻燃型環氧樹脂填充。
- ◆ Mounting: Mounted in parallel with the contacts to be protected or in parallel with the inductive load (Fig3-1,3-2).  
安裝： 分與受保護接觸器并聯及電感負載并聯方式。
- ◆ Phase: single-phase and three-phase, 分為單相和三相

**FUNCTION:** On electronic equipment, industrial equipment, contactors, relays, electrical control system of circuit loop, the noise or spark occurs, will be absorbed by the RC functions, Protected contacts, eliminate the noise effectively.

對電子器材，工業器材，工業設備，接觸器，電器控制系統，對電路的回路，出現的火花，產生的噪音，都會被RC的功能吸收，有效保護觸點，消除噪音。

- ◆ Noise and arc suppression/ Snubber Network 異音和火花消除和吸收網絡
- ◆ Contactor and relay contact protection 接觸器和繼電器觸點保護
- ◆ Good surge absorption of Magnetic switch, solenoid switch, relay and electromagnetic valve  
對磁級開關，電磁開關，繼電器和電磁閥之突波有良好吸收功能
- ◆ Noise reduction on controllers and drives 控制器和驅動器噪音消除
- ◆ EMI / RFI reduction EMI / RFI 消滅器
- ◆ dv / dt suppression dv / dt 抑制

**Application:** RC snubber can effectively protect the contact and prevent sparks and noise, When electrical switch starts.

For examples, Blender, coffee machine, printing machine, dimmers. Industrial uses: industrial machinery, Switches, motor control, computer systems, telecommunications systems, automation equipment, elevators and automatic escalators.

在電器開關啟動時，可有效保護接觸及防止火花和燥音。例如：攪拌機，咖啡機，彩印機，調光器等。

工業用途：工業機械，開關，電機控制，電腦系統，電信系統，自動化設備，電梯和自動扶手電梯等。

### Specifications

- ◆ Capacitance Range: 0.1uF, 0.25UF, 0.47UF, 0.5UF, 1.0UF or as customer requests
- ◆ Voltage Range:

V <sub>RAC</sub>	24	125	250	400	480	600	660	700
V <sub>RDC</sub>	24	200	900	1000	1000	1600	2000	3000

- ◆ Capacitance & Resistance Tolerance: ± 10%
- ◆ Resistor Values: 22 Ω, 33 Ω, 47 Ω, 68 Ω, 82 Ω, 100 Ω, 125 Ω, 150 Ω, 220 Ω, 330 Ω, 470 Ω, 680 Ω. (or as customer requests)
- ◆ Operating Temperature Range: -40°C ~ +80°C
- ◆ Dielectric Withstand Voltage: 1.6 x rated voltage at 25°C
- ◆ DC Life Test: 125% of rated voltage for a period of 500H at 80°C with capacitance change ≤ 5%  
1.25倍額定電壓下，80°C試驗500H，容量變化率不超過5%。
- ◆ Long Term Stability: The capacitance shall not change more than 2% when stored at ambient temperature and humidity for a period of 2 years or less. 在常溫環境下儲存兩年內，容量變化率不超過2%。

Metallized Polypropylene RC Snubber Network  
金屬化聚丙烯膜RC組件吸收網絡

Type RCS-single-phase

- Box type with UL 1015 20AWG(Code 3),or 18AWG(code 2).
- Circuit type is Fig 2-1
- Maximum peak surge voltage is 1.6 times the rated DC voltage
- Temperature range: -40°C to +80°C
- We can offer other values of wattage and resistance or capacitance and voltages according to customer's requests.

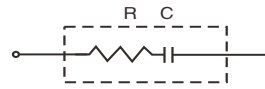


Fig:2-1

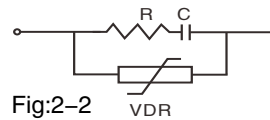


Fig:2-2

容量 cap.(u F)	額定電壓 $U_{RAC}$	額定電壓 $U_{RDC}$	最高峰 值電壓 AC- $V_{PP}$	最高浪 涌電壓 DC- $V_{PP}$	電阻值 OHMS	偏差值 Tol. (± %)	功率 Power (瓦特 W)	尺寸Dimensions			電線Lead wire L=m/m	編號: P/N:	
								W	H	T			
1	0.5	125	200	200	320	22	10	1/2	26.5	19	10	100~250	RC504K2LE41022W3*0
2	0.5	125	200	200	320	33	10	1/2	26.5	19	10	100~250	RC504K2LE41033W3*0
3	0.5	125	200	200	320	47	10	1/2	26.5	19	10	100~250	RC504K2LE41047W3*0
4	0.5	125	200	200	320	68	10	1/2	26.5	19	10	100~250	RC504K2LE41068W3*0
5	0.5	125	200	200	320	82	10	1/2	26.5	19	10	100~250	RC504K2LE41082W3*0
6	0.5	125	200	200	320	100	10	1/2	26.5	19	10	100~250	RC504K2LE41100W3*0
7	0.5	125	200	200	320	125	10	1/2	26.5	19	10	100~250	RC504K2LE41125W3*0
8	0.5	125	200	200	320	150	10	1/2	26.5	19	10	100~250	RC504K2LE41150W3*0
9	0.5	125	200	200	320	220	10	1/2	26.5	19	10	100~250	RC504K2LE41220W3*0
10	0.5	125	200	200	320	330	10	1/2	26.5	19	10	100~250	RC504K2LE41330W3*0
11	0.5	125	200	200	320	470	10	1/2	26.5	19	10	100~250	RC504K2LE41470W3*0
12	0.5	125	200	200	320	680	10	1/2	26.5	19	10	100~250	RC504K2LE41680W3*0

容量 cap.(u F)	額定電壓 $U_{RAC}$	額定電壓 $U_{RDC}$	最高峰 值電壓 AC- $V_{PP}$	最高浪 涌電壓 DC- $V_{PP}$	電阻值 OHMS	偏差值 Tol. (± %)	功率 Power (瓦特 W)	尺寸Dimensions			電線Lead wire L=m/m	編號: P/N:	
								W	H	T			
1	1	125	200	200	320	22	10	1	26	21.5	12	100~250	RC105K2LE6102213*0
2	1	125	200	200	320	33	10	1	26	21.5	12	100~250	RC105K2LE6103313*0
3	1	125	200	200	320	47	10	1	26	21.5	12	100~250	RC105K2LE6104713*0
4	1	125	200	200	320	68	10	1	26	21.5	12	100~250	RC105K2LE6106813*0
5	1	125	200	200	320	82	10	1	26	21.5	12	100~250	RC105K2LE6108213*0
6	1	125	200	200	320	100	10	1	26	21.5	12	100~250	RC105K2LE6110013*0
7	1	125	200	200	320	125	10	1	26	21.5	12	100~250	RC105K2LE6112513*0
8	1	125	200	200	320	150	10	1	26	21.5	12	100~250	RC105K2LE6115013*0
9	1	125	200	200	320	220	10	1	26	21.5	12	100~250	RC105K2LE6122013*0
10	1	125	200	200	320	220	10	2	26	21.5	12	100~250	RC105K2LE8122023*0
11	1	125	200	200	320	330	10	1	26	21.5	12	100~250	RC105K2LE6133013*0
12	1	125	200	200	320	470	10	1	26	21.5	12	100~250	RC105K2LE6147013*0
13	1	125	200	200	320	680	10	1	26	21.5	12	100~250	RC105K2LE6168013*0

# FILM CAPACITORS

## Metallized Polypropylene RC Snubber Network

### 金屬化聚丙烯膜RC組件吸收網絡

#### Type RCS–single–phase

- Box type with UL 1015 20AWG(Code 3),or 18AWG(code 2).
- Circuit type is Fig 2–1
- Maximum peak surge voltage is 1.6 times the rated DC voltage
- Temperature range: –40°C to +80°C
- We can offer other values of wattage and resistance or capacitance and voltages according to customer's requests.

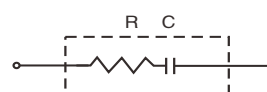


Fig:2-1

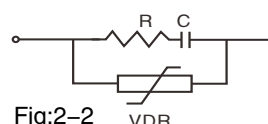


Fig:2-2

容量 cap.(u F)	額定電壓 $U_{RAC}$	額定電壓 $U_{RDC}$	最高峰 值電壓 AC- $V_{PP}$	最高浪 涌電壓 DC- $V_{PP}$	電阻值 OHMS	偏差值 Tol. (±%)	功率 Power (瓦特 W)	尺寸Dimensions			電線Lead wire L=m/m	編號: P/N:	
								W	H	T			
1	0.1	250	900	400	1450	22	10	1	26.5	19	10	100~250	RC104K2IE4102213*0
2	0.1	250	900	400	1450	33	10	1	26.5	19	10	100~250	RC104K2IE4103313*0
3	0.1	250	900	400	1450	47	10	1	26.5	19	10	100~250	RC104K2IE4104713*0
4	0.1	250	900	400	1450	68	10	1	26.5	19	10	100~250	RC104K2IE4106813*0
5	0.1	250	900	400	1450	82	10	1	26.5	19	10	100~250	RC104K2IE4108213*0
6	0.1	250	900	400	1450	100	10	1	26.5	19	10	100~250	RC104K2IE4110013*0
7	0.1	250	900	400	1450	125	10	1	26.5	19	10	100~250	RC104K2IE4112513*0
8	0.1	250	900	400	1450	150	10	1	26.5	19	10	100~250	RC104K2IE4115013*0
9	0.1	250	900	400	1450	220	10	1	26.5	19	10	100~250	RC104K2IE4122013*0
10	0.1	250	900	400	1450	330	10	1	26.5	19	10	100~250	RC104K2IE4133013*0
11	0.1	250	900	400	1450	470	10	1	26.5	19	10	100~250	RC104K2IE4147013*0
12	0.1	250	900	400	1450	680	10	1	26.5	19	10	100~250	RC104K2IE4168013*0

容量 cap.(u F)	額定電壓 $U_{RAC}$	額定電壓 $U_{RDC}$	最高峰 值電壓 AC- $V_{PP}$	最高浪 涌電壓 DC- $V_{PP}$	電阻值 OHMS	偏差值 Tol. (±%)	功率 Power (瓦特 W)	尺寸Dimensions			電線Lead wire L=m/m	編號: P/N:	
								W	H	T			
1	0.25	250	900	400	1450	22	10	1	26	21.5	12	100~250	RC254k2IE6102213*0
2	0.25	250	900	400	1450	33	10	1	26	21.5	12	100~250	RC254k2IE6103313*0
3	0.25	250	900	400	1450	47	10	1	26	21.5	12	100~250	RC254k2IE6104713*0
4	0.25	250	900	400	1450	68	10	1	26	21.5	12	100~250	RC254k2IE6106813*0
5	0.25	250	900	400	1450	82	10	1	26	21.5	12	100~250	RC254k2IE6108213*0
6	0.25	250	900	400	1450	100	10	1	26	21.5	12	100~250	RC254k2IE61010013*0
7	0.25	250	900	400	1450	125	10	1	26	21.5	12	100~250	RC254k2IE61012513*0
8	0.25	250	900	400	1450	150	10	1	26	21.5	12	100~250	RC254k2IE61015013*0
9	0.25	250	900	400	1450	220	10	1	26	21.5	12	100~250	RC254k2IE61022013*0
10	0.25	250	900	400	1450	330	10	1	26	21.5	12	100~250	RC254k2IE61033013*0
11	0.25	250	900	400	1450	470	10	1	26	21.5	12	100~250	RC254k2IE61047013*0
12	0.25	250	900	400	1450	680	10	1	26	21.5	12	100~250	RC254k2IE61068013*0

Metallized Polypropylene RC Snubber Network

金屬化聚丙烯膜RC組件吸收網絡

Type RCS-single-phase

- Box type with UL 1015 20AWG(Code 3),or 18AWG(code 2).
- Circuit type is Fig 2-1
- Maximum peak surge voltage is 1.6 times the rated DC voltage
- Temperature range: -40°C to +80°C
- We can offer other values of wattage and resistance or capacitance and voltages according to customer's requests.

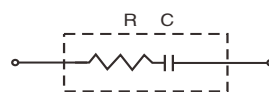


Fig:2-1

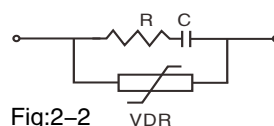


Fig:2-2

容量 cap.(u F)	額定電壓 $U_{RAC}$	額定電壓 $V_{RDC}$	最高峰 值電壓 $AC-V_{PP}$	最高浪 涌電壓 $DC-V_{PP}$	電阻值 OHMS	偏差值 Tol. (±%)	功率 Power (瓦特 W)	尺寸Dimensions			電線Lead wire L=m/m	編號: P/N:	
								W	H	T			
1	0.47	250	900	400	1450	22	10	1	38	24	13	100~250	RC474K213a102213*0
2	0.47	250	900	400	1450	33	10	1	38	24	13	100~250	RC474K213a103313*0
3	0.47	250	900	400	1450	47	10	1	38	24	13	100~250	RC474K213a104713*0
4	0.47	250	900	400	1450	68	10	1	38	24	13	100~250	RC474K213a106813*0
5	0.47	250	900	400	1450	82	10	1	38	24	13	100~250	RC474K213a110013*0
6	0.47	250	900	400	1450	100	10	1	38	24	13	100~250	RC474K213a112513*0
7	0.47	250	900	400	1450	125	10	1	38	24	13	100~250	RC504K213a115013*0
8	0.47	250	900	400	1450	150	10	1	38	24	13	100~250	RC474K213a122013*0
9	0.47	250	900	400	1450	220	10	1	38	24	13	100~250	RC474K213a122013*0
10	0.47	250	900	400	1450	220	10	2	40	28	16	100~250	RC474K213a122013*0
11	0.47	250	900	400	1450	330	10	1	38	24	13	100~250	RC474K213a133013*0
12	0.47	250	900	400	1450	470	10	1	38	24	13	100~250	RC474K213a147013*0
13	0.47	250	900	400	1450	680	10	1	38	24	13	100~250	RC474K213a168013*0

容量 cap.(u F)	額定電壓 $U_{RAC}$	額定電壓 $U_{RDC}$	最高峰 值電壓 $AC-V_{PP}$	最高浪 涌電壓 $DC-V_{PP}$	電阻值 OHMS	偏差值 Tol. (±%)	功率 Power (瓦特 W)	尺寸Dimensions			電線Lead wire L=m/m	編號: P/N:	
								W	H	T			
1	0.1	400	1000	640	1600	125	10	1	26	21.5	12	100~250	RC104K2RE6112513*0
2	0.22	400	1000	640	1600	100	10	1	26	21.5	12	100~250	RC224K2RE6110013*0
3	0.22	400	1000	640	1600	220	10	2	32	25	15	100~250	RC224K2R36122021*0
4	0.33	400	1000	640	1600	220	10	3	38	24	13.5	100~250	RC334K2R3P122031*0
5	0.33	400	1000	640	1600	27	10	3	38	24	13.5	100~250	RC334K2R3P102731*0
6	0.47	400	1000	640	1600	100	10	1	38	24	13.5	100~250	RC474K2R3P110012*0
7	0.47	400	1000	640	1600	220	10	2	40	28	16	100~250	RC474K2R42122021*0

## Metallized Polypropylene RC Snubber Network

### 金屬化聚丙烯膜RC組件吸收網絡

#### Type RCS–single–phase

- Box type with UL 1015 20AWG(Code 3),or 18AWG(code 2).
- Circuit type is Fig 2–1
- Maximum peak surge voltage is 1.6 times the rated DC voltage
- Temperature range: –40°C to +80°C
- We can offer other values of wattage and resistance or capacitance and voltages according to customer's requests.

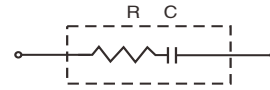


Fig:2-1

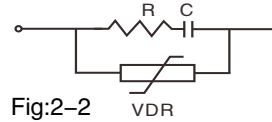


Fig:2-2

容量 cap.(u F)		額定電壓 $U_{RAC}$	額定電壓 $U_{RDC}$	最高峰 值電壓 AC- $V_{PP}$	最高浪 涌電壓 DC- $V_{PP}$	電阻值 OHMS	偏差值 Tol. (±%)	功率 Power (瓦特 W)	尺寸Dimensions			電綫Lead wire L=m/m	編號: P/N:
									W	H	T		
1	1.5	480	1000	770	1600	20	10	5	42	44	24	100–350 mm, UL 18#/16#	RC155K484W102051*0
2	1.5	480	1000	770	1600	20	10	5	50	34	22		RC155K4852102051*0
3	2	480	1000	770	1600	220	10	5	42	44	24		RC205K484W122051*0
4	2.5	480	1000	770	1600	125	10	5	42	44	24		RC255K484W112551*0
5	3.3	480	1000	770	1600	5	10	5	57.5	45	30		RC335K485F100551*0

容量 cap.(u F)		額定電壓 $U_{RAC}$	額定電壓 $U_{RDC}$	最高峰 值電壓 AC- $V_{PP}$	最高浪 涌電壓 DC- $V_{PP}$	電阻值 OHMS	偏差值 Tol. (±%)	功率 Power (瓦特 W)	尺寸Dimensions			電綫Lead wire L=m/m	編號: P/N:
									W	H	T		
1	0.047	480	1000	770	1600	100	10	15	60	43	30	100–350 mm, UL 18#/16#	RC473K48681100B2*0
2	0.047	480	1000	770	1600	125	10	5	60	43	30		RC473K4868112552*0
3	0.047	600	1600	960	2560	100	10	20	60	50	35		RC473K2Z6B1100C2*0
4	0.047	600	1600	960	2560	125	10	5	60	43	30		RC473K2Z68112551*0
5	0.1	480	1000	770	1600	47	10	2	40	29	19		RC104K4843104722*0
6	0.1	600	1600	960	1600	220	10	2	40	29	19		RC104K2Z43122022*0
7	0.1	600	2000	1040	3200	47	10	2	40	29	19		RC104K2Z43104722*0
8	0.22	480	1000	770	1600	27	10	3	42	30	22		RC224K484R102731*0
9	0.5	480	1000	770	1600	15	10	5	57.5	45	25		RC504K4856101551*0
10	0.5	480	1000	770	1600	15	10	5	/	L62	D40		RC504K48R2101551*1
11	0.5	480	1000	770	1600	100	10	5	57.5	45	25		RC504K4856110051*0
12	0.5	480	1000	770	1600	220	10	2	60	39	25		RC504K4864122021*0
13	1	480	1000	770	1600	100	10	10	57.5	50	35		RC105K485E1100A1*0

Metallized Polypropylene RC Snubber Network  
金屬化聚丙烯膜RC組件吸收網絡

Type RCS-single-phase

- Box type with UL 1015 20AWG(Code 3),or 18AWG(code 2).
- Circuit type is Fig 2-2
- Maximum peak surge voltage is 1 times the rated DC voltage
- Temperature range: -40°C to +80°C
- We can offer other values of wattage and resistance or capacitance and voltages according to customer's requests.

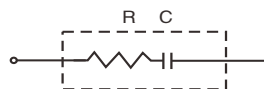


Fig:2-1

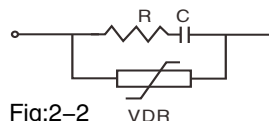


Fig:2-2

容量 cap.(u F)	額定電壓 $U_{RAC}$	額定電壓 $U_{RDC}$	壓敏電阻 VDR	電阻值 OHMS	偏差值 Tol. (±%)	功率 Power (瓦特 W)	尺寸Dimensions			電線Lead wire L=m/m	編號: P/N:	
							W	H	T			
1	0.47	24	24	5/7N560K	220	10	1/2	32	22	13	150mm	RC474K1BF2V220W3**
2	0.47	24	24	5/7N560K	220	10	1/2	32	22	13	P29	RC474K1BF2V220W6**
3	0.22	110	110	5/7N221K	47	10	1/2	32	22	13	150mm	RC224K1BF2V047W3**
4	0.22	110	110	5/7N221K	47	10	1/2	32	22	13	P29	RC224K1BF2V047W6**
5	0.22	250	250	5/7N471K	220	10	1	32	22	13	150mm	RC224K2IF2V22013**
6	0.22	250	250	5/7N471K	220	10	1	32	22	13	P29	RC224K2IF2V22016**