

FILM CAPACITORS

Metallized Polypropylene RC Snubber Network

RoHs compliant

Type RCS

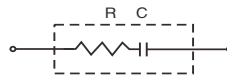
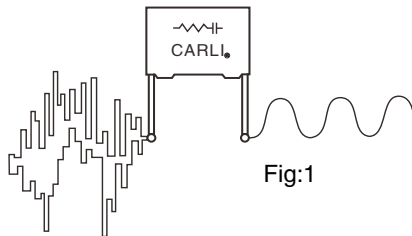


Fig:2-1

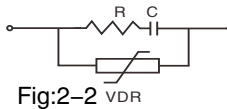


Fig:2-2 VDR

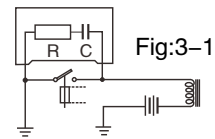


Fig:3-1

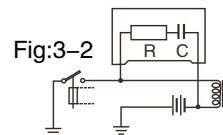


Fig:3-2

Construction:

- ◆ Metallized Polypropylene film capacitor in series with a resistor (Fig 2-1,2-2)
- ◆ Encapsulated in plastic box or wrapped tape with retardant Epoxy Resin sealed of UL 94V0
- ◆ Mounting: Mounted in parallel with the contacts to be protected or in parallel with the inductive load(Fig3-1,3-2).
- ◆ Phase: single-phase and three-phase

FUNCTION: On electronic equipment, industrial equipment, contactors, relays, electrical control system of circuit loop, the noise or spark occurs, will be absorbed by the RC functions, Protected contacts, eliminate the noise effectively.

- ◆ Noise and arc suppression/ Snubber Network
- ◆ Contactor and relay contact protection
- ◆ Good surge absorption of Magnetic switch, solenoid switch, relay and electromagnetic valve
- ◆ Noise reduction on controllers and drives
- ◆ EMI / RFI reduction
- ◆ dv / dt suppression

Application: RC snubber can effectively protect the contact and prevent sparks and noise, When electrical switch starts.

For examples, Blender, coffee machine, printing machine, dimmers. Industrial uses: industrial machinery, Switches, motor control, computer systems, telecommunications systems, automation equipment, elevators and automatic escalators.

Specifications

- ◆ Capacitance Range: 0.1uF, 0.25uF, 0.47uF, 0.5uF, 1.0uF or as customer requests
- ◆ Voltage Range:

URAC	24	125	250	400	480	600	660	700
URDC	24	200	900	1000	1000	1600	2000	3000

- ◆ Capacitance & Resistance Tolerance: $\pm 10\%$
- ◆ Resistor Values: 22 Ω , 33 Ω , 47 Ω , 68 Ω , 82 Ω , 100 Ω , 125 Ω , 150 Ω , 220 Ω , 330 Ω , 470 Ω , 680 Ω . (or as customer requests)
- ◆ Operating Temperature Range: $-40^{\circ}\text{C} \sim +80^{\circ}\text{C}$
- ◆ Dielectric Withstand Voltage: 1.6 x rated voltage at 25°C
- ◆ DC Life Test: 125% of rated voltage for a period of 500H at 80°C with capacitance change $\leq 5\%$
- ◆ Long Term Stability: The capacitance shall not change more than 2% when stored at ambient temperature

Metallized Polypropylene RC Snubber Network

Type RCS-single-phase

- Box type with UL 1015 20AWG(Code 3),or 18AWG(code 2).
- Circuit type is Fig 2-1
- Maximum peak surge voltage is 1.6 times the rated DC voltage
- Temperature range: -40°C to +80°C
- We can offer other values of wattage and resistance or capacitance and voltages according to customer's requests.

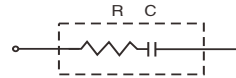


Fig:2-1

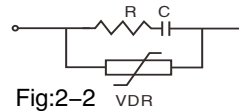


Fig:2-2

cap.(u F)	U _{RAC}	U _{RDC}	AC-V _{PP}	DC-V _{PP}	OHMS	Tol. (± %)	Power (W)	Dimensions			Lead wire L=m/m	P/N:	
								W	H	T			
1	0.5	125	200	200	320	22	10	1/2	26.5	19	10	100~250	RC504K2LE41022W3*0
2	0.5	125	200	200	320	33	10	1/2	26.5	19	10	100~250	RC504K2LE41033W3*0
3	0.5	125	200	200	320	47	10	1/2	26.5	19	10	100~250	RC504K2LE41047W3*0
4	0.5	125	200	200	320	68	10	1/2	26.5	19	10	100~250	RC504K2LE41068W3*0
5	0.5	125	200	200	320	82	10	1/2	26.5	19	10	100~250	RC504K2LE41082W3*0
6	0.5	125	200	200	320	100	10	1/2	26.5	19	10	100~250	RC504K2LE41100W3*0
7	0.5	125	200	200	320	125	10	1/2	26.5	19	10	100~250	RC504K2LE41125W3*0
8	0.5	125	200	200	320	150	10	1/2	26.5	19	10	100~250	RC504K2LE41150W3*0
9	0.5	125	200	200	320	220	10	1/2	26.5	19	10	100~250	RC504K2LE41220W3*0
10	0.5	125	200	200	320	330	10	1/2	26.5	19	10	100~250	RC504K2LE41330W3*0
11	0.5	125	200	200	320	470	10	1/2	26.5	19	10	100~250	RC504K2LE41470W3*0
12	0.5	125	200	200	320	680	10	1/2	26.5	19	10	100~250	RC504K2LE41680W3*0

cap.(u F)	U _{RAC}	U _{RDC}	AC-V _{PP}	DC-V _{PP}	OHMS	Tol. (± %)	Power (W)	Dimensions			Lead wire L=m/m	P/N:	
								W	H	T			
1	1	125	200	200	320	22	10	1	26	21.5	12	100~250	RC105K2LE6102213*0
2	1	125	200	200	320	33	10	1	26	21.5	12	100~250	RC105K2LE6103313*0
3	1	125	200	200	320	47	10	1	26	21.5	12	100~250	RC105K2LE6104713*0
4	1	125	200	200	320	68	10	1	26	21.5	12	100~250	RC105K2LE6106813*0
5	1	125	200	200	320	82	10	1	26	21.5	12	100~250	RC105K2LE6108213*0
6	1	125	200	200	320	100	10	1	26	21.5	12	100~250	RC105K2LE6110013*0
7	1	125	200	200	320	125	10	1	26	21.5	12	100~250	RC105K2LE6112513*0
8	1	125	200	200	320	150	10	1	26	21.5	12	100~250	RC105K2LE6115013*0
9	1	125	200	200	320	220	10	1	26	21.5	12	100~250	RC105K2LE6122013*0
10	1	125	200	200	320	220	10	2	26	21.5	12	100~250	RC105K2LE8122023*0
11	1	125	200	200	320	330	10	1	26	21.5	12	100~250	RC105K2LE6133013*0
12	1	125	200	200	320	470	10	1	26	21.5	12	100~250	RC105K2LE6147013*0
13	1	125	200	200	320	680	10	1	26	21.5	12	100~250	RC105K2LE6168013*0

FILM CAPACITORS

Metallized Polypropylene RC Snubber Network

Type RCS–single–phase

- Box type with UL 1015 20AWG(Code 3),or 18AWG(code 2).
- Circuit type is Fig 2–1
- Maximum peak surge voltage is 1.6 times the rated DC voltage
- Temperature range: –40°C to +80°C
- We can offer other values of wattage and resistance or capacitance and voltages according to customer's requests.

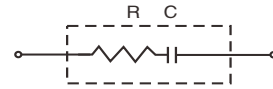


Fig:2-1

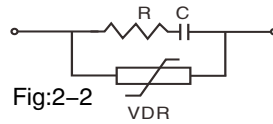


Fig:2-2

cap.(u F)	U _{RAC}	U _{RDC}	AC–V _{PP}	DC–V _{PP}	OHMS	Tol. (± %)	Power (W)	Dimensions			Lead wire	P/N:	
								W	H	T	L=m/m		
1	0.1	250	900	400	1450	22	10	1	26.5	19	10	100~250	RC104K2IE4102213*0
2	0.1	250	900	400	1450	33	10	1	26.5	19	10	100~250	RC104K2IE4103313*0
3	0.1	250	900	400	1450	47	10	1	26.5	19	10	100~250	RC104K2IE4104713*0
4	0.1	250	900	400	1450	68	10	1	26.5	19	10	100~250	RC104K2IE4106813*0
5	0.1	250	900	400	1450	82	10	1	26.5	19	10	100~250	RC104K2IE4108213*0
6	0.1	250	900	400	1450	100	10	1	26.5	19	10	100~250	RC104K2IE4110013*0
7	0.1	250	900	400	1450	125	10	1	26.5	19	10	100~250	RC104K2IE4112513*0
8	0.1	250	900	400	1450	150	10	1	26.5	19	10	100~250	RC104K2IE4115013*0
9	0.1	250	900	400	1450	220	10	1	26.5	19	10	100~250	RC104K2IE4122013*0
10	0.1	250	900	400	1450	330	10	1	26.5	19	10	100~250	RC104K2IE4133013*0
11	0.1	250	900	400	1450	470	10	1	26.5	19	10	100~250	RC104K2IE4147013*0
12	0.1	250	900	400	1450	680	10	1	26.5	19	10	100~250	RC104K2IE4168013*0

cap.(u F)	U _{RAC}	U _{RDC}	AC–V _{PP}	DC–V _{PP}	OHMS	Tol. (± %)	Power (W)	Dimensions			Lead wire	P/N:	
								W	H	T	L=m/m		
1	0.25	250	900	400	1450	22	10	1	26	21.5	12	100~250	RC254K2IE6102213*0
2	0.25	250	900	400	1450	33	10	1	26	21.5	12	100~250	RC254K2IE6102213*0
3	0.25	250	900	400	1450	47	10	1	26	21.5	12	100~250	RC254K2IE6102213*0
4	0.25	250	900	400	1450	68	10	1	26	21.5	12	100~250	RC254K2IE6102213*0
5	0.25	250	900	400	1450	82	10	1	26	21.5	12	100~250	RC254K2IE6102213*0
6	0.25	250	900	400	1450	100	10	1	26	21.5	12	100~250	RC254K2IE6102213*0
7	0.25	250	900	400	1450	125	10	1	26	21.5	12	100~250	RC254K2IE6102213*0
8	0.25	250	900	400	1450	150	10	1	26	21.5	12	100~250	RC254K2IE6102213*0
9	0.25	250	900	400	1450	220	10	1	26	21.5	12	100~250	RC254K2IE6102213*0
10	0.25	250	900	400	1450	330	10	1	26	21.5	12	100~250	RC254K2IE6102213*0
11	0.25	250	900	400	1450	470	10	1	26	21.5	12	100~250	RC254K2IE6102213*0
12	0.25	250	900	400	1450	680	10	1	26	21.5	12	100~250	RC254K2IE6102213*0

Metallized Polypropylene RC Snubber Network

Type RCS–single–phase

- Box type with UL 1015 20AWG(Code 3),or 18AWG(code 2).
- Circuit type is Fig 2-1
- Maximum peak surge voltage is 1.6 times the rated DC voltage
- Temperature range: -40°C to +80°C
- We can offer other values of wattage and resistance or capacitance and voltages according to customer's requests.

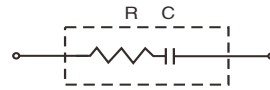


Fig:2-1

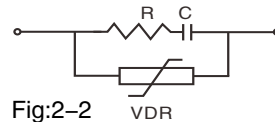


Fig:2-2

cap.(u F)	U _{RAC}	U _{RDC}	AC-V _{PP}	DC-V _{PP}	OHMS	Tol. (± %)	Power (W)	Dimensions			Lead wire L=m/m	P/N:	
								W	H	T			
1	0.47	250	900	400	1450	22	10	1	38	24	13	100~250	RC474K2I3a102213*0
2	0.47	250	900	400	1450	33	10	1	38	24	13	100~250	RC474K2I3a103313*0
3	0.47	250	900	400	1450	47	10	1	38	24	13	100~250	RC474K2I3a104713*0
4	0.47	250	900	400	1450	68	10	1	38	24	13	100~250	RC474K2I3a106813*0
5	0.47	250	900	400	1450	82	10	1	38	24	13	100~250	RC474K2I3a110013*0
6	0.47	250	900	400	1450	100	10	1	38	24	13	100~250	RC474K2I3a112513*0
7	0.47	250	900	400	1450	125	10	1	38	24	13	100~250	RC474K2I3a115013*0
8	0.47	250	900	400	1450	150	10	1	38	24	13	100~250	RC474K2I3a122013*0
9	0.47	250	900	400	1450	220	10	1	38	24	13	100~250	RC474K2I3a122013*0
9	0.47	250	900	400	1450	220	10	2	40	28	16	100~250	RC474K2I42122013*0
10	0.47	250	900	400	1450	330	10	1	38	24	13	100~250	RC474K2I3a133013*0
11	0.47	250	900	400	1450	470	10	1	38	24	13	100~250	RC474K2I3a147013*0
12	0.47	250	900	400	1450	680	10	1	38	24	13	100~250	RC474K2I3a168013*0

cap.(u F)	U _{RAC}	U _{RDC}	AC-V _{PP}	DC-V _{PP}	OHMS	Tol. (± %)	Power (W)	Dimensions			Lead wire L=m/m	P/N:	
								W	H	T			
1	0.1	400	1000	640	1600	125	10	1	26	21.5	12	100~250	RC104K2RE6112513*0
2	0.22	400	1000	640	1600	100	10	1	26	21.5	12	100~250	RC224K2RE6110013*0
3	0.22	400	1000	640	1600	220	10	2	32	25	15	100~250	RC224K2R36122021*0
4	0.33	400	1000	640	1600	220	10	3	38	24	13.5	100~250	RC334K2R3P122031*0
5	0.33	400	1000	640	1600	27	10	3	38	24	13.5	100~250	RC334K2R3P102731*0
6	0.47	400	1000	640	1600	100	10	1	38	24	13.5	100~250	RC474K2R3P110012*0
7	0.47	400	1000	640	1600	220	10	2	40	28	16	100~250	RC474K2R42122021*0

FILM CAPACITORS

Metallized Polypropylene RC Snubber Network

Type RCS–single–phase

- Box type with UL 1015 20AWG(Code 3),or 18AWG(code 2).
- Circuit type is Fig 2–1
- Maximum peak surge voltage is 1.6 times the rated DC voltage
- Temperature range: -40°C to $+80^{\circ}\text{C}$
- We can offer other values of wattage and resistance or capacitance and voltages according to customer's requests.

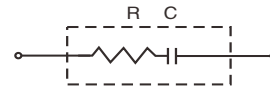


Fig:2-1

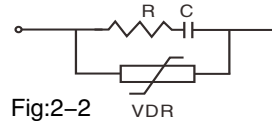


Fig:2-2

cap.(u F)	U_{RAC}	U_{RDC}	AC- V_{PP}	DC- V_{PP}	OHMS	Tol. ($\pm\%$)	Power (W)	Dimensions			Lead wire L=m/m	P/N:	
								W	H	T			
1	1.5	480	1000	770	1600	20	10	5	42	44	24	100-350 mm, UL 18#/ 16#	RC155K484W102051*0
2	1.5	480	1000	770	1600	20	10	5	50	34	22		RC155K4852102051*0
3	2	480	1000	770	1600	220	10	5	42	44	24		RC205K484W1220551*0
4	2.5	480	1000	770	1600	125	10	5	42	44	24		RC255K484W112551*0
5	3.3	480	1000	770	1600	5	10	5	57.5	45	30		RC335K485F100551*0

cap.(u F)	U_{RAC}	U_{RDC}	AC- V_{PP}	DC- V_{PP}	OHMS	Tol. ($\pm\%$)	Power (W)	Dimensions			Lead wire L=m/m	P/N:	
								W	H	T			
1	0.047	480	1000	770	1600	100	10	15	60	43	30	100-350 mm, UL 18#/ 16#	RC473K48681100B2*0
2	0.047	480	1000	770	1600	125	10	5	60	43	30		RC473K4868112552*0
3	0.047	600	1600	960	2560	100	10	20	60	50	35		RC473K2Z6B1100C2*0
4	0.047	600	1600	960	2560	125	10	5	60	43	30		RC473K2Z68112551*0
5	0.1	480	1000	770	1600	47	10	2	40	29	19		RC104K4843104722*0
6	0.1	600	1600	960	1600	220	10	2	40	29	19		RC104K2Z43122022*0
7	0.1	600	2000	1040	3200	47	10	2	40	29	19		RC104K2Z43104722*0
8	0.22	480	1000	770	1600	27	10	3	42	30	22		RC224K484R102731*0
9	0.5	480	1000	770	1600	15	10	5	57.5	45	25		RC504K4856101551*0
10	0.5	480	1000	770	1600	15	10	5	/	L62	D40		RC504K48R2101551*1
11	0.5	480	1000	770	1600	100	10	5	57.5	45	25		RC504K4856110051*0
12	0.5	480	1000	770	1600	220	10	2	60	39	25		RC504K4864122021*0
13	1	480	1000	770	1600	100	10	10	57.5	50	35		RC105K485E1100A1*0

Metallized Polypropylene RC Snubber Network

Type RCS–single–phase

- Box type with UL 1015 20AWG(Code 3),or 18AWG(code 2).
- Circuit type is Fig 2-2
- Maximum peak surge voltage is 1 times the rated DC voltage
- Temperature range: -40°C to +80°C
- We can offer other values of wattage and resistance or capacitance and voltages according to customer's requests.

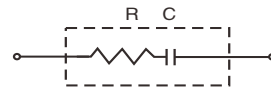


Fig:2-1

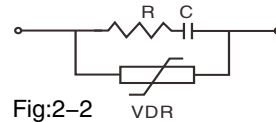


Fig:2-2

cap.(u F)		U _{RAC}	U _{RDC}	VDR	OHMS	Tol. (± %)	Power (W)	Dimensions			Lead wire L=m/m	P/N:
								W	H	T		
1	0.47	24	24	5/7N560K	220	10	1/2	32	22	13	150mm	RC474K1BF2V220W3**
2	0.47	24	24	5/7N560K	220	10	1/2	32	22	13	P29	RC474K1BF2V220W6**
3	0.22	110	110	5/7N221K	47	10	1/2	32	22	13	150mm	RC224K1BF2V047W3**
4	0.22	110	110	5/7N221K	47	10	1/2	32	22	13	P29	RC224K1BF2V047W6**
5	0.22	250	250	5/7N471K	220	10	1	32	22	13	150mm	RC224K2IF2V22013**
6	0.22	250	250	5/7N471K	220	10	1	32	22	13	P29	RC224K2IF2V22016**